

IV B.Tech I Semester Supplementary Examinations, November 2005
BUILDING PLANNING DESIGN & DRAWING (FOR 99 BATCH)
(Civil Engineering)

Time: 3 hours**Max Marks: 80**

Answer any FIVE Questions
All Questions carry equal marks

1. Write short notes on the following:
 - (a) Building bye-laws.
 - (b) Classification of buildings.
 - (c) Open spaces in buildings. [6+5+5]
2. Differentiate between the regulations that have to be followed in Group Housing Scheme from those for independent residences. [16]
3. Explain in detail how the orientation of building helps to get good ventilation to a building. [16]
4. Sketch a single line plan for a residential building and show the position of doors and windows for good ventilation. [16]
5. List out the principles of architectural composition and explain, in detail, any two of them with neat sketches, if required. [8+4+4]
6. (a) Draw a bubble diagram/chart to explain the circulation pattern in a 3-bedroomed house, with separate living and dining room, kitchen, store, puja, three toilets and a utility room.
(b) How would you minimize circulation area in the above house? [8+8]
7. Design an health club for the following requirements and draw a line diagram.
 - (a) Reception with waiting room -1No.
 - (b) Managers room -1 No.
 - (c) Coaches room -2Nos.
 - (d) Dressing room -2Nos.
 - (e) Gym rooms -2Nos.
 - (f) Toilet blocks -2 Nos.
 - (g) Refreshment hall -1No. [16]
8. Note: The following specifications may be taken unless otherwise specified in the individual line plans.
The line plan in the figure below shows the internal dimensions in mm. Draw to a suitable scale the following views:

(a) Plan

(b) Sectional Elevation

Select suitable positions and sizes of doors and windows

According your choice, if it not given in the line plans. The specifications for the buildings are as follows:

- i. Foundation depth below ground level.....1.1.m
- ii. Plinth height above ground level1.0 m
- iii. Mansonry in foundation and up to plinth – Uncoused rubble masonry in lime mortar.....1:2.
- iv. Mansonry in superstructure -1½ brick in cement mortar 1:6
- v. Flooring – 25 mm thick mosaic tiles on 100mm thick 1:4:8 concrete bed.
- vi. Doors – Timber doors fully paneled at suitable places and of suitable sizes.
- vii. Windows – Timber fully glazed at suitable places and of suitable sizes.
- viii. Roof:
 - A. for sloped roof – A.C.sheets over timber purlins or mangalore tiled roof.
 - B. for flat R.C.C.roof – 120mm thick R.C.C.slab of 1:2:4 with 80mm thick wearing course.

Assume any other suitable data wherever required and mention the same in the drawing.(figure1) [12+4]

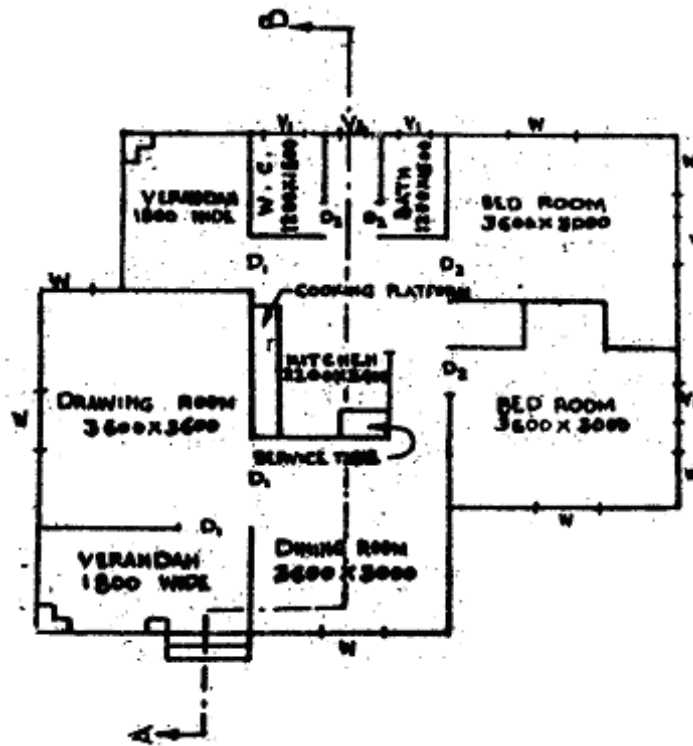


Figure 1:
